

CATALOGUE OF THE COLLECTION OF WOOD-TYPE

DONATED TO THE BIBLIOGRAPHY ROOM,
BODLEIAN LIBRARY, BY STEPHEN
AUSTIN AND SONS, 2013

INTRODUCTION TO THE CATALOGUE

In 2013 Stephen Austin and Sons generously donated a large collection of wood-type to the Bodleian Bibliography Room. The type was the remainder of their own stock, which had been in storage in their premises in Hertfordshire since the firm ceased using wood-type for letterpress printing, probably in the 1960s. The type had recently been placed in cardboard boxes, in complete disarray, and was covered with decades of dust, and bird and rodent faeces. The donation was made on the condition that Stephen Austin would take back a small quantity of wood-type to make a display in the foyer of its premises, and that any type of historical importance should be offered to Reading University's Department of Typography & Graphic Communication. The rest of the collection would be transferred outright to the Bodleian Libraries, to use in the Bibliography Room or offer to other printers and/or museums as the Superintendent of the Room (then Paul W. Nash) thought appropriate. Nash undertook to clean, sort and catalogue the collection, and organise the division of the collection between the Bodleian, Reading and Stephen Austin.

The cleaning, sorting and cataloguing was completed in 2016. A very few of the types were found to be affected by woodworm and were destroyed. The type was arranged, as far as possible, into founts, and each was catalogued in the form of a printed card bearing some specimen impressions of the type with annotations (these are detailed on the following page). Once complete, the catalogue cards were sorted by type-size and assigned the numbers 1–167. The cards are reproduced here, in order, as the catalogue of the collection. There were also a few single characters which belonged to no fount, and a number of (mostly wooden) illustrative blocks, which were not catalogued. In 2018 Reading University removed the few founts and individual types which were deemed to be of historical importance (catalogue numbers 9, 10, 48, 53, 85, 87, 117, 118, 127, 148 and 163) and Stephen Austin took a selection of odd types to make their display (including catalogue numbers 64, 134, 161, 162, 164 and 167). The cards for the founts which have been removed remain in the catalogue, which is intended to represent the whole collection as donated by Stephen Austin, but have been marked with labels showing that they now belong to Reading or Stephen Austin and Sons. The remaining types have been preserved for use in the Bibliography Room, with the intention that any which are subsequently passed on to others should be so marked in this catalogue.

P.W.N. 2023

EXPLANATION OF THE CATALOGUE-CARDS FOR THE COLLECTION

Location of the type in a numbered box or type-case in the Bibliography Room

Box 23 (small)

Specimen of the type (an alphabet if space allows).

ABCDEFGHIJKLM
NOPQRSTUVWXYZ

Transcription of any manufacturers' marks on the type (often only on the 'A' and 'a')

"SB&CO"

nicks

Whether or not the type has nicks.

N.B. Another (Delittle) fount is similar but has no nicks

General notes, including comparisons with other types in the collection.

Caps fount, 4A
points, ?

(B)

Assessment of the importance of the type.
A = neither B nor C; B = practically useful (in extent, size and/or form) but not important; C = historically important.

Catalogue number.

Heading for the type (its size measured in 12-point lines, form and approximate date).

8-Line Sans
ca. 1900s

(28)

Box 22
(small)

3-Line Numerals ①
(roman)

1920s?

\$1234567890

No marks
No nicks

NB: some sorts on
4-line body

Numerals (3x1, 2x2, 2x3,
1x4, 1x5, 2x6, 2x7, 1x8,
2x9, 4x0) \$

A/B

Box 22
(small)

3-Line Italic
(Caslon Bold?)
(inclined)

②

1900s?

ABCDEFGHIJKLLM
NOPQRSTUVWXYZ
acbehilmnorstuvwxyzjfgpqy

No marks
No nicks

NB: Inclined body
NB: Some sorts on 4-Line body

Full font 2A/3a
(no b, k, v) ! ☐
ffi ffi fi

B

Case 1

4-line slab-serif ⁽³⁾
ca. 1910?

A B C D E F G H I J K L
M N O P Q R T S U V W
X Y Z a b c d e f g h i j k l m
n o p q r s t u v w x y z 1 2 3

DE LITTLE
YORK

No 76

(no nicks)

Full font, SA, 8a, numerals,
points, & c.

B

Box 25 (small)

4-line sans
ca. 1900?

(4)

**ABCDEFGHIJKLMN
OPQRSTUVWXYZ &
£12345678**

DELITTLE
YORK

No 221

(no nicks)

Caps, GA, numerals, points,
& £.

(8)

Box 23 (small)

4-line sans (S)
ca. 1900? 5

A B C D E F G H I J K L M
N O O P Q R S T U V W X
Y Z a b c d e f g h i j k l m n o
p q r s t u v w x y z 1 2 3 4 5

Full font, 2A, 6a, numerals,
points, ?, !, &, £

DE LITTLE
YORK

Nº 47

(no nicks)

(B)

Box ~~33~~ 35
(small)

4-Line Sans Italic^(b)
(inclined)
1940s? 6

BCDEFGHIJKL
MNOPQRSTU VW
XYZabc efgijqr S
£123456789

DELITTLE
YORK

NB: Inclined body

NO 192

No nicks

Full point 4A/4a
(no A, R, d, h) & !
? 1 point
Numerals (B)

Box 26 (small)

S-line condensed⁽⁷⁾
sans-serif
ca. 1910?

ABCDEFGHIJKLMNOPS
TUVWXYZabcdefghijklmnop
nopqrstvwxyz12345789

Full font 3A, 5a, numerals,
points, &, £, ? , ! .

DE LITTLE
YORK

No 58

(no nicks)

(B)

Box 28 (small)

5-line sans-serif, extended
ca. 1900? ⑧

A B C E G H I
J K L M N O
P Q R S T U
V W X Y Z a
b c d e m s t



D&C
PATENT HARD FACE
MACHINE CUT

NB: Also in 6-line

NB: Some sorts on 6-line
body

(no nicks)

Imperfect fount 2 A (no D, F), 5a (no g,
j, p, q, x, z), numerals, points, &, £ ⑧

~~(NB: Missing 1/c are all the descending characters + z)~~ all found in 6-line

Box 27 (small)

6-line didone (9)

ca. 1820-1830 ?

A D E E E E L
N O R V V

THIS FOUNT WAS TRANSFERRED
TO READING UNIVERSITY'S
DEPARTMENT OF TYPOGRAPHY
AND GRAPHIC COMMUNICATION
18 MARCH 2018

These only: A D E E E
L N O R V

no visible marks

hand-carved?

©

Box 30 (small)

6-line slab-serif

1840s? (10)

THIS FONT WAS TRANSFERRED
TO READING UNIVERSITY'S
DEPARTMENT OF TYPOGRAPHY
AND GRAPHIC COMMUNICATION
18 MARCH 2018

**I1KOiik &
1mnorss&**

No visible marks
No ticks

(Very incomplete and
damaged, but early(?))

Upper and lower case
(here only)
+ g (on 8-line body)

(C)

Box 30 (small)

6-line slab-serif
1920s?

11

1 2 3 4 5
6 7 8 0 £

No visible marks
No nicks

(originally nine of each, with
a double helping of 2s?)
(pricing font?)

Numerals only (?), plus £ (belongs?)
1 (9), 2 (16), 3 (4), 4 (8), 5 (9)
6/9 (17), 7 (6), 8 (9), 0 (9)
£ (2)

Ⓑ

Box 27 (small)

6-line sans serif, (12)
condensed

ca. 1920s?

ABCDEFGHIJKLMNO
PQRSTUVWXYZ&?

NB: There is a very similar
font, incomplete, without
marks or nicks

Caps font 4 A
some points, &, ? , !

S B & CO

nicks

(B)

Box 28 (small)

6-line saw serif (13)

ca. 1920s?

A B C D E H I K L M
N O R S T U X &

No visible marks
No nicks

(NB: There is a very similar
font, with nicks)

Caps font 3A (no F,
G, J, P, Q, V, W, Y, Z),
&, points

(A)

Box 30 (small)

6-line saw serif (14)
condensed

1910s?

ABCDEFGHIJKLMN
OPQRSTUVWXYZ

"S.B. & Co."

Nicks

(NB: There is a very similar font,
without nicks or marks)

Caps font SA (no G),
points, &

Ⓑ

Box 26 (small)

6-line sans serif (15)

ca. 1900s?

**ABCDEFGHIJLM
NOPRTXYZ**

No visible marks
No nicks

Caps Fount 3A (wants G,
J, K, Q, S, U, V, W)
numerals, !

Very incomplete and worn

(A)

Box 30 (small)

6-line sans serif (16)

ca. 1920?

A B C D E F G H I J K L M N
O P Q R S T V W X Y Z a b
c d e f g h i j k l m n o p q r s t w

DEUTLE
YORK

No 50

full font- 3A / Sa (no U),
numerals, points, &, £, ?

(B)

no wicks

Box 27 (small)

6-line sans serif (17)

1910s-1920s?

Three (?) different but
very similar fonts.

"S.B. & Co."

↓
① **AKWW** no nicks

② **CDJ J M N N O U V V Y** no nicks

③ **CCD I M O O O O O O V** nicks

A in ① might belong with ②
M in ③ may not belong

see above for
marks and nicks

↑
There only
Three (?) incomplete
fonts.

① A

Case 2

6-line sans serif (18)

1930s?

ABCDEFGHIJK
LMNOPPPQRST
abcdefghijklrst

S B & CO

nicks on some
(two or more fonts combined?)

full font 14A/17a
punctuation, &, !, ?,
numerals (no 4)
Variant P

(B)

Box 30 (small)

6-line sans serif⁽¹⁹⁾
1860/1870??

19

**ADDECU
MNRST&**

erssv

No visible marks
No nicks

(Very worn, dirty and incomplete
font - an early sans?)

← Caps font (here only), points,
≠.
← Lower case (here only)
(belong?)

©?

Box 30 (small)

6-Line Sans Serif (20)
extended

ca. 1900?

A B C D E F
G H I J K L N
M O P Q R
S T a b c t y



D & C

PATENT HARD FACE
MACHINE CUT

no nicks

NB: also in s-line

NB: Some sorts on 7-line body

Full font 3A/5a,
numerals, points, &, £

(B)

Case 7

6-Line Sans (21)
Italic
(inclined)

1950s?

ABCDEFGHIJ
KLMNOPQU
abcdefghijkl
lmopqrstuvw

DELITCO
YORK
No 191

No Nicks

NB: Inclined body

Full font 2A/4a
(no R, S, r) points
& ! ? £
Numerals (B)

Box ³⁵~~48~~ (small)

6-line sans italic (22)
(inclined)
1920s?

A B C D E F
H G I J K L S
a b c d e f g
h i j k l m n s

SB & CO

No nicks

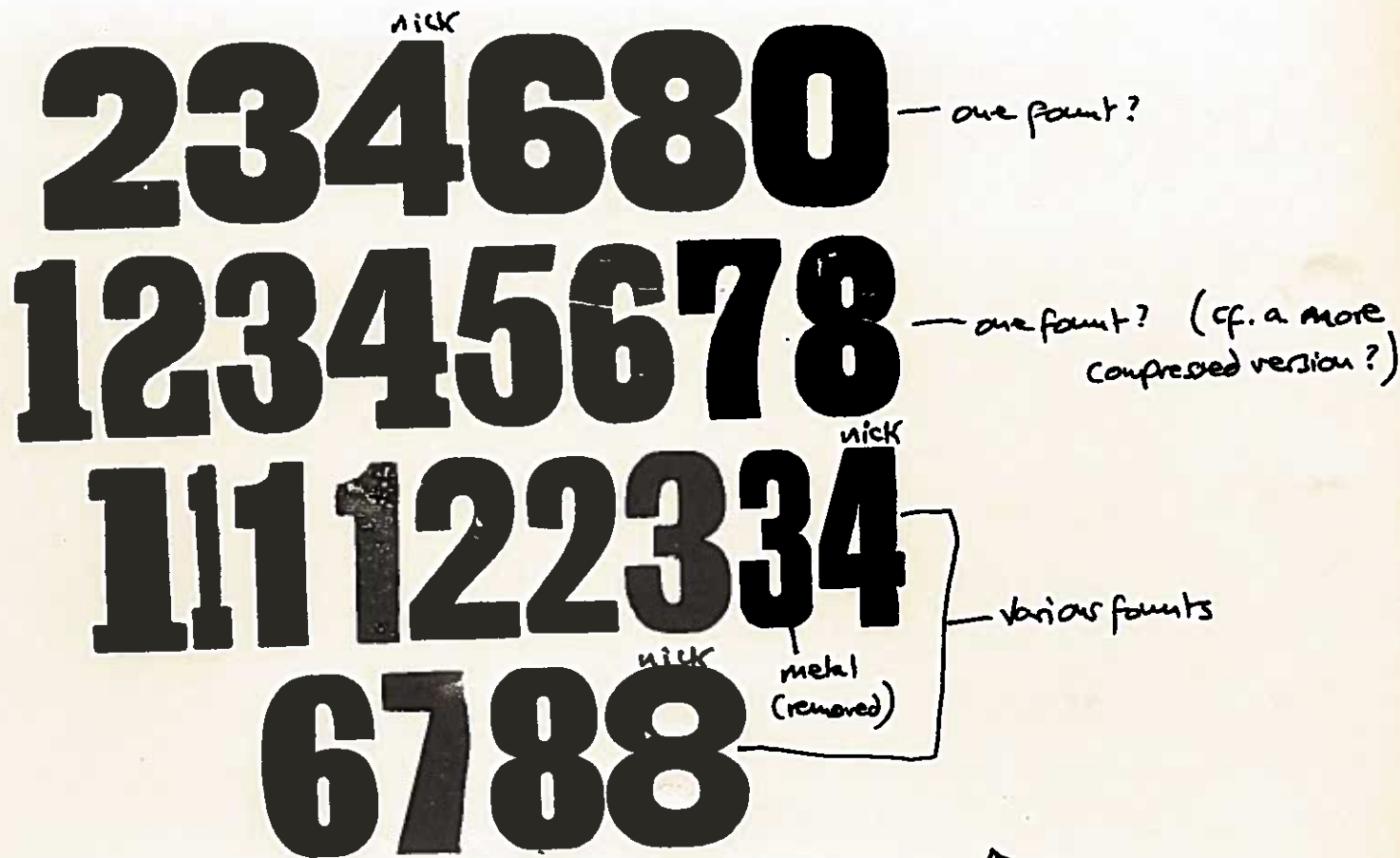
NB: Inclined body

Full font 4A/4a
points, & ! ? (B)

Box 30 (small)

6-line misc. numerals
1900-1930s?

23



No visible marks
Nicks as noted above

↑
These, plus a few duplicates.

Ⓐ

Box ~~34~~ 35
(small)

7/8-Line Cursive Italic ²⁴
(inclined)

1890s/1920s?

A B C D E F
a b c d d f i o o p w
1 2 3 4 5 6 7 8 0

variants

variants

No marks

Nicks on most sorts

NB: Inclined body

NB: Cap etc. on 8-Line, L/ etc. on 7-Line body

NB: Very battered and broken

NB: Variants - two fonts (1890s? + 1920s?)
combined?

Full font 3A/4a
(no G, J?, x) (no
unbroken g) e 8?!
ff Fi e points
Numerals (B)?

Case 3

8-Line roman (Sidone)

1950s (25)

A B C D E F G
H I J K L M N
O P Q R S &

No visible marks
Nicks

Good condition

Caps font; originally SA?
(only 1 A left)
&, ?, same points (B)

Box 30 (small)

8-Line Saw serif (26)
condensed
1920s?

ABCDEFGHIJKLM
NOPQRSTUVWXYZR

S.B.
& Co

nicks

(NB: There is a very similar font,
without nicks or marks, and
slightly less condensed)

Caps font ⁵/₈ A (~~A to R~~)
? points, &

(B)

Box 24 (small)

8-Line
Sans (27)

ca. 1890s?

ABCDEFGHIJK
LMNORSTUWX

correct?

(NB: There is another, similar type,
with ticks (and slightly more
condensed))

A few variant (wrong?) characters

no visible marks
no nicks

~~caps~~ caps font 3A
no P, Q, R, Y, Z

(B)?

Box 23 (small)

8-Line Sans (28)

ca. 1900s

ABCDEFGHIJKLM
NOPQRSTUVWXYZ

"SBB&CO"

nicks

N.B. Another (Delittle) font is
similar but has no nicks

Caps font, 4A
points, ?

(B)

Box 22 (small)

8-Line sans (29)
ca. 1900s?

ABCDEFGHIJKLMN
OPQRSTUVWXYZ

DE LITTLE
YORK

No 53 nonicks

N.B. Another (SB) font is
very similar but has nicks

7
Caps font, A (~~not~~)
points, ?, &, £, numerals

(B)

Box 24 (small)

8-Line Sans, (30)
ca. 1880s/1890s?

ACDEFHIKL
UYNOPRSZ

No visible marks
no nick

Small cap font, no B,
G, J, M, Q, V, W; some
numerals (roque?), points,
&, ?.

(A)

Box 22 (small)

8-Line sans (31)
ca. 1880s/1890s?

ABCDEFGHIJ
KLMNOPQR
STUVWXYZ

"SB&CO"
nicks

6
Caps font, A
points, ~~unmarked~~,
&? (B)

Box 27 (small)

8-LINE SANS (32)

ca. 1900?

32

A C D E F G H I J L M
N O Q S T U V W X Y

SB&CO

Nicks

N.B.: There is at least one very
similar font.

7A
Caps, ~~EA~~, ~~imperfect~~
(no ~~E~~, ~~F~~, ~~G~~, ~~H~~)
points, &. 2, 3, 4, 7, 8, 0

(B)

Box 23 (small)

8-LINE SANS (33)

Ca. 1910?

ABEFGLMN
ORSTUVYZ

no visible
marks

NB: There are two very similar fonts
without nicks, and one with.

Caps, 2A, very imperfect.
(No ~~some~~ I, K, P, Q, W or Z)
points

(A)

Box 28 (small)

8-LINE SANS (34)

ca. 1960?

PLASTIC

ADEGIL
NOSTVX

(sharp edges)

No visible marks
Nicks

NB: Plastic-faced - red in colour
Very similar to an earlier SB
font.

Caps, ²/₄ A, Very imperfect
(no B, C, F, H, J, K, M, P-R,
U, W, Y, or Z) ³/₇ (A)

Box 25 (small)

8-LINE SANS (35)

Ca. 1900?

A B E G I J L M O P
Q R S T V W X Y

DEUTSCHE
YORK
(one A only)
no nicks

Very blackened. NB: There are too very
similar fonts without nicks, and are
with.

Caps, 2A, very imperfect
(no C, D, F, H, K, N, U or Z)
Points. /-

(A)

Box 13

8-Line Sans Serif (36)
Ca. 1920?

A B C D E F G H
I J K L M O P Q
R S T U V W X

LAWRENCE
WOODTYPE
LONDON

no nicks

Caps font 4A (No N, Z)
points &.

(B)

Box 26 (small)

8-LINE SANS (37)

ca. 1900

ACDEFG
LMNOUO

diff. 0

diff. 0

No visible marks
no nicks

NB: There are two similar fonts without
nicks, and two with.

NB: Two fonts? Note different weights and
counters.

Caps, 1 A, very imperfect
(no B, H, I, J, K, ~~P, Q, S, T~~
P, Q, S, T or
V-Z) points.

(A)

Box 28 (small)

8-Line Sans (38)

1930s?

A B C D E F G H J
M N O Q R S 7 8

SB&CO

Caps font 4A,
numerals, points,
&, ?

(B)

no nicks

Box 14 (large)

8-Line Sans Serif (39)
Ca. 1920s?

A B C D E F G
H I K L M N O
P Q R S T U V

"SB&co"

nicks

Caps font SA? (only 2A
now) No J.

Numerals, points, ?, &.

(No 2, 3)

(B)

Case 1

8-line sans

(40)

ca. 1950?

A B C D E F G H I J
K L M Q a b c d e f g
h i m n o r y 1 3 7 8

DE LITTLE
YORK

No 49

no nicks

full font 6A 89, numerals,
points, £, \$, !

(B)

Box 25 (small)

8-Line Sans Bold

(41)

ca. 1920s?

ABDEFG
HIJLMN
PUY&

No visible marks
No nicks

Poor condition
Some hand-curved?

~~Cap~~ Caps font 2A (originally larger?)
(Wants C, K, O, Q, R, T, V, W, X)

+ &

(A)

Box 19 (large)

8-Line Sans

(42)

ca. 1950?

ABCDEFGHI!
JKLMNOPQ8

DELITTLE
YORK

no nicks

NB: There is a very similar font by
De Little, a little more extended

Caps font, SA, numerals,
points, ?, &, ? + OE

(B)

Box 13
(large)

8-Line sans serif.
ca. 1940?

(43)

A B D E F G H H
I J K L M N O P
Q R S T U V W

"SB&CO"
nicks

Caps font, originally SA?
numerals, points, £, &.

(B)

Box 4

8-Line sans

(44)

ca. 1950?

A B C D E F G H
I J K M O P Q 8

DE LITTLE
YORK

no nicks

Caps point SA
+ numerals (pass. from
a different font)

(B)

Box 25 (small)

8-Line numerals extended (45)

1930s?

1 2 3 4
5 6 7 8
&

No visible marks
No wicks

No ϕ
&

(B)?

Box 12 (large)

8-Line numerals (sans serif) + stray punctuation. (46)

1900s?

nicks

2 3 4 5 6
7 8 9 0 £

[illegible]

No visible marks

A diagram showing a sequence of 12 blocks arranged in two rows. The top row has 5 blocks, and the bottom row has 7 blocks. A bracket under the first 5 blocks of the bottom row is labeled "nick3".

Numerals (no 1), ~~2~~ \neq

ⓑ?

Box ~~26 (small)~~
12 (large)

10-LINE SLAB-SERIF (47)
1880s/1890s?

A B C D E
G I J K L
M N O R

↑
upside
dash

Caps, ³/₄ A (~~1880s, 1890s, 1900s~~)
points, &.

No visible marks
No nicks

©?

Box 14

10-Line Slab-Serif
1850s/1860s (1884?)

A B B C
D E E F
Q R W

Two 48
variants,
one
hand-
carved?

THIS FOUNT WAS TRANSFERRED
TO READING UNIVERSITY'S
DEPARTMENT OF TYPOGRAPHY
AND GRAPHIC COMMUNICATION
18 MARCH 2018

Circular mark of
"D&C" or "D&G"
"PATENT 1884"

Upper case only, 6 A
numerals, &, £

©

Box 21 (small)

10-Line Roman Reversed
1960s? (49)



PATENT HARD-FAÇE MACHINE CUT

(all sorts marked)

No nicks

Caps font, one of each
(no C, E, H, O, P, S, X).



Box 26 (small)

10-Line Sans,
Condensed ~~44~~ 50
1940s?

ABCDEFGHIJKLMN
OPQRSTUVWXYZ&



nicks

Caps font 3A,
& points.



Box 23 (small)

10-Line sans,
condensed (SI)
1930s/1940s

ACCDDDDGG
HHILLNRT

X X X X

No visible marks

Nicks (except
where marked X)

NB: Probably a S.B. font

Caps, very
imperfect (all
shown)

(A)

Box 21 (small)

10-Line sans, condensed
1940s/1950s/?



52

ABCDEFGHIJ
KLMNOPQR
STUVWXYZ

SB&CO

Nicks

Caps 2A, ?, &, points

(B)

In case 7

10-Line

Sans

Largely (wholly?)
hand-carved. 1890s?
1900s?



(S3)

A A B C D E F G
H I J K L M N O P
Q R S T U V &

No marks found

Full upper-case (complete
but random-scheme, 3A)

Æ Æ + punctuation (B) (C)?
&.

Box 12 (lage)

10-Line Sans (S4)
1950s?

ABCDEFGHIJ
K PQSabcde
fghijklrstuy

DE LITTLE
YORK




No 50

no nick

Full font
32A/6a
numerals
± &
(no points)

(B)

Box 26 (small)

10-Line sans 
1930s? 


ABCEFH
M
ORSTWY

THIS FONT WAS TRANSFERRED
TO READING UNIVERSITY'S
DEPARTMENT OF TYPOGRAPHY
AND GRAPHIC COMMUNICATION
18 MARCH 2018

SB&CO

Nicks

Very imperfect and
battered

Caps fount 3A (no
D, G, I-L, N, P, Q, U,
V, X, Z).

(A)

Box 25 (small)

10-Line Sans (56)
1920s?

ABEEEEKLL
LLNNOPSUY

No Visible Marks
No Nicks

Caps. Very incomplete.
(all shown)

(A)

Box 13 (large)

10-Line sans



1940s?

ABCDEQ

Radcbfg

ijrstwy

SB&CO

no nicks

NB: There is a similar font,
slightly bolder, by De Little;
+ another with ~~nicks~~ nicks.

Full fount, originally
3A/6a (only one A
remains), &, ?, points.



Box 16 (large)

10-Line sans

1930s/1940s (S8)

ABCDEF
GJKLMN
PQRSW

SB&CO

Nicks

NB: Another font, without nicks and
with lower-case, is virtually identical

caps 2A (no H, I, T) (B)
numerals (no 1, 5) ?
& some points

Box 12 (large)

10-Line sans ~~(B)~~
1900s?
(S9)

A B C D E
Q a d c b e
f g h i j k r s

DE LITZ
YORK

Nº 303

no nicks

(B)
Full font 3A/4a (no
G, R, S, W, q)? & points

Box 21 (small)

10-Line sans
1900s?

~~60~~
60

CCDFIL
MNOP
PRSW.

No visible
marks
(no A)

Nicks

Probably a SB fount
Battered

Caps fount, very incomplete
(all shown above)

A

Box 12 (large)

10-Line Sansitalic ⁽⁶¹⁾
(Gill?)

1930s?

ABCDEG
abcdef gfl

DELITTLE
YORK
N^o 317

no nicks

Full fount 3A/3a
Ligatures Æ æ œ
& !, ? points

(B)

Box 21 (small)

10-Line numerals
and stray points

62

1234567890



“”””””””””
nicks

hand-carved

“”””””””””

nick

!!!!!!//??&&&&

home-made

Novisible marks

Nicks as noted

Full set of
numerals

B

Case 5

12-Line bracketed (63)
slab-serif

1870s/1880s?

A B C D E
F G P Q R

No visible marks
No nicks

Caps fount 3A
Numerals (no 2, 5, 7, 8)
some points, & (B)

Box 31 (large)

12-Line slab serif (64)

1950s?

12459
XGEO

THIS FOUNT WAS TRANSFERRED
TO STEPHEN AUSTIN AND SONS
(WHENCE IT ORIGINATED)
9 FEBRUARY 2018

No marks (no A)
Nick

Numerals only (no 3)
Plus E, G, O, X

(A)

Box 18A (Jarge)

12-Line sans (65)
condensed
1940s?

A B C D E F G H I J K L M
N O P Q R S U V W X Y Z

No marks
No nicks

NB: Another, very similar font
is slightly more condensed

Caps font 2A (no F, I,
O, T, X) points (B)

Case 4

12-Line sans
condensed

(66)

1950s?

ABCDEFGHIJKLMN
OPQRSTUVWXYZ

DELITTLE
YORK
No 58

No marks

NB: There is a very similar font
without marks, slightly less
condensed

Caps fonts 4 A
numerals,
points & £! (B)

Box 31 (large)

12-Line sans
condensed

(67)

1940s?

ABCDEFGHIJ
KLMNOPQRS

DEUTLE
YORK
No. 41

No nick

Caps point 4A
Numerals
point 1!?

(B)

Box 31 (large)

12-line sans

(68)

1940s?

A B D H K L M
N O P R T V W

SB&CO

No nicks

NB: One of three very similar
founts.

Caps fount (No, C, E, F, G,
I, J, Q, S, X-Z) some
points, ?, & (A)

Box 16 (large)

12-Line Sans (69)
1930s?

BCEGKJLO
QRSTUY

No marks
No nick

NB: One of three very similar
incomplete fonts.

Caps font (no A, D, F,
H, I, M, N, P, V, X, Z)
Some points
& ≠ (A)

Case 4

12-Line sans
(Art Nouveau?)

(70)

1950s?

A B C D E F G H J
K L M N O Q 2 3 8

DELITTLE
YORK
Nº 256

No wicks

Caps font 3 A
numerals
puncts & £!

(B)

Box 18A (large)

12-Line Sans (71)
1940s?

ABCDEFGHIJKL
MOQUWXY

No visible marks
No wicks

NB: This is one of three very
similar, incomplete fonts

Caps font (no C-F,
N, P, R, T, V, Z) numerals
punctuation, & (A)

Box 31 (large)

12-Line sans
1920s/1930s?

(72)

ABCDEFGHIJ
KLMN

(SB
&co)

Nicks

Caps font 6A
Numerals
puncts ? & £

(B)

Box 21 (small)

12-Line sans

(73)

1930s?

(73)

ABCDEG
abcdehmo

SB&CO

Very incomplete

No nicks

Full font (no F, J, L, Q,
U-Z, f, g, i-l, n, p, q, s, u, w,
x, z) some points

(A)

Box 19

12-Line (74)

Sans
ca. 1900?

A B C D E F
G H J K M
Q R S T W

"S B & CO"
nicks

NB: Very similar to font 75

Upper case, 4 A, num-
erals, points, £, ?
(B)

Box 184 (large)

12-Line sans (75)
1920s?

ABCEFH
NOPST

SB
& Co

Nicks

NB: Very incomplete
NB: Very similar to font 74

Caps font (no D, G,
I-M, Q, R, U-Z) (A)

Box 18A (large)

12-Line sans

(76)

1930s?

ABCDEF
GHIJKQR

LAWRENCE
WOOD TYPE
LONDON

No nicks

Caps font 3A
points

(B)

Box 16 (large)

12-Line sans

77

1930s?

ABCDE
FGHIJK

SB & CO
Nicks

Caps font 3A (no Z)
numerals, some points
t &

③

Box 8 (large)

12-Line Sans

78

1950s?

ABCDER
arstypog

DELITCO
YORK
No 49

No nicks

Full font SA/8a
points, ? & !, £
numerals

(B)

Box 31 (large)

12-Line sans

1940s?

(79)

A B C D
G H J K I

SB&CO

Nicks (a few sorts without)

Caps font 3A
Some points

(B)

Case 5

12-Line sans (80)
numerals
(stand-alone)

12345
9780

DELITTLE
YORK

No nick

Full numeral point
± (B)

Case 3

12-Line cursive sans (81)

1960s ?

ABCDE
FGHIJK

DAY 8 COLLINS
RD.
480737

NB: Some sorts on 14-line body
Variant E

↑
(all sorts) No nicks

(B)

Case 3

12-line cursive sans⁽⁸⁶⁾
~~outline~~ (outline)
1960s?

82

A B C D E
F G H I J K

DAY & COLLEGE
RD
480739

(all sorts) No niche

NB: Some sorts on 14-line body
Variant E

Caps font 2A (1 serif)
points

(B)

Box 18A (large)

12 ~~14~~-Line sans italic (83)
(Gill-like) 1930s?

ARSTY
Pograp

DELITTLE
YORK

No. 317

No nicks

4A/4a? originally?
Full font, ligatures, (nob)
pointr, ?, &, ! (B)

Box 21 (small)

12-Line (84)
stray
points

& & £ ? ?

z z z & & & &

! , , , , , , , ,

N=nich

(B)?

Box 1

14-Line roman (85)
ca. 1880s?

BCE
FRS

THIS FONT WAS TRANSFERRED
TO READING UNIVERSITY'S
DEPARTMENT OF TYPOGRAPHY
AND GRAPHIC COMMUNICATION
18 MARCH 2018

No visible marks
(no A)

Caps font 1A (no A,
D, H, I, N, Z) numerals,
?, some Aints. (A) (C)?

Box 25 (small)

14-Line slab-serif (86)
(condensed)
1880s/1890s?

A B C D E F G H I J K L
M N O P Q R S T U V

No visible marks
no nick

Caps font, SA (3 Cs, all
broken), numerals, points, £.
Very worn and damaged (B)

Box 23 (small)

14-Line bracketed slab⁽⁸¹⁾
serif.
ca. 1860s?

A B C D E
F G H I J K L M N O P Q R S

THIS FOUNT WAS TRANSFERRED
TO READING UNIVERSITY'S
DEPARTMENT OF TYPOGRAPHY
AND GRAPHIC COMMUNICATION
18 MARCH 2018

no visible
marks
No nicks

Type uneven in height. Some hand-cut (?),
Some double-sided. (13-Line? Pre-point
standardisation?)

Caps fount, no
K, Q, ~~W~~ (C)?

Box 2 (large)

14-Line "Gothic Tuscan
Pointed" 1880s? (88)

A B C D E F G H I J
K L M N O P R S

MILLER & RICHARD
on H, M, O, P

Caps font 3A (no Q)
! & some points (S)? (C)?

Box 15 (large)

14-Line Sans (89)
1930s?

A B C D E F G
J K M N O Q R

DEUTSCHE
YORK

NO 46

no nicks

Caps font 3A
Numerals, points, (B)
& ?

Box 31 (large)

14-Line Modified sans ⁽⁹⁰⁾
1890s?

ABCDEF
GJMORY

PATENT
HANDSET
D&C
TYPE

Caps font 2A (no I)
& some points (B)

Box 14

16-LINE ROMAN (91)

1960s?

A B C D E F
M M Q R W

"SB & CO" no nicks

"RBN 692690" = numerals
(same font?)

Very clean: some sorts unused

Caps: 6A, points, & + Numerals (?)
L/c: z, s, j, y only
Variant M + U

(B)

Box 6 (large)

16-Line numerals

(92)

1890s?

1 2 3 4
5 6 7 8

No visible marks
No nicks

Numerals only
3 of each (one 1, two 0s),
≠ (B)

Box 3 (large)

16-Line slab-serif (93)
Numerals
ca. 1900?

1 2 3 4
5 6 7 8

No visible marks
No nicks

Numerals are only of:
4, 7, 8, 0 (A)?

Box 15

16-Line bracketed (94)
slab-serif
1890s?

ACEGI
LMPT

No visible marks
No nicks

Caps font
only A, C, E, G, I, L,
L, M, P, R, T (A)

Box 1

16-Line slab serif (95)

1860s?

ARST
YGTB

No visible marks
No nicks

NB: With the following facsimiles:
R x 3 + K x 2 = metal
V x 1 = Lino
NB: Very incomplete

Caps font 1A
(no C, M, P, X) -
(A) (C)?

Box 4 (large)

16-Line Slab-serif (96)

1890s?

ARSTY
PQGGJ

No visible marks
No nicks

Caps font 1A
(no D, O, Y, Z) (A)?
& some points

Box 5 (large)

16-Line Slab-Serif (97)

1880s?

ARSTY
POGAW

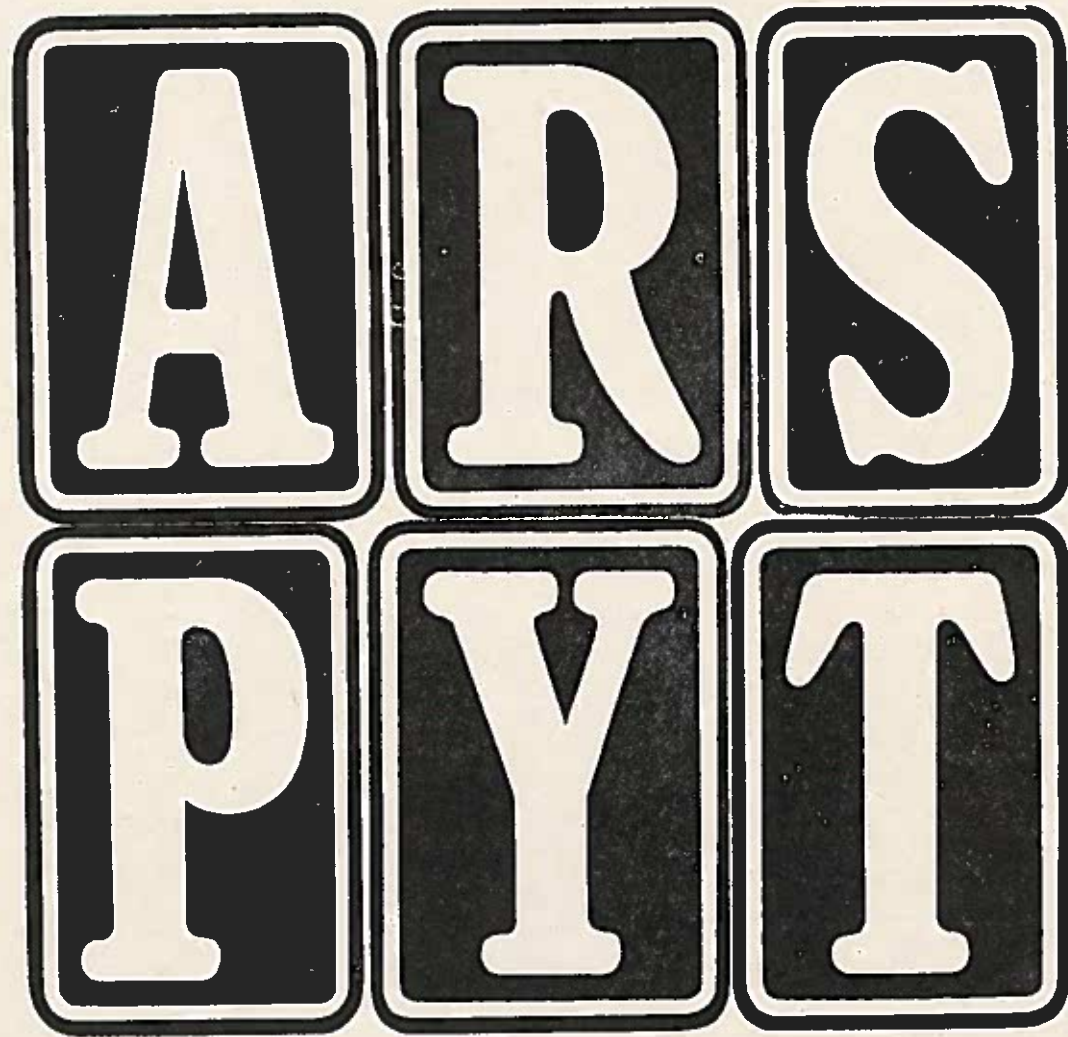
No visible marks
No nicks

Caps faint, originally 3 A?
(no B, K, V)
Numerals, & ÷, 2/3 (B)

Box 6

16-Line roman (98)
reversed

1960s?



PATENT MACHINE CUT
HARD-FACE



No nicks

Caps font-
1 of each
(no X) (B)

Box 9

16-Line Cursive (99)
Roman
(inclined)

ATP

1950s?

typogr

Full fount 2A/4a
(no D) points FF&
Numerals (no 2, 3
6, 7) (B)

NB: Variant E
NB: Some sort on 20-Line body
NB: Inclined body

(all sorts)

DAY & COLLINS
RD
235396

Box 19

16-Line cursive (100)

Roman
(semi-outline)
(inclined)

1960s?

ATP

typogr

Full point 2 A/4a
(no U, c) points
ff ? ! & " and" logotype
Numerals

NB: Variant E
NB: Some sorts on 20-Line body
NB: Inclined body

No nicks

(all sorts)

DAY & COLLINS
Re
235396

(B)

Box 4 (large)

16-Line sans serif (101)

1930s?

ARSTYPOGR
AFIAWXYZ&

SB
Q@

Nicks

NB: There are several similar fonts
without nicks

Caps font SA
?!& points (B)

Box 15

16-Line sans serif (102)
condensed

1880s?

ARSTYPO
GBCDEFW

No visible marks
No nicks

Caps font 2A
(no Q) & ! t (B)
points

Box 1

16-Line Sans Serif (103)
Condensed
1940s?

ARSTYPOG
BCWXYZ12

NB: One of four very similar fonts
without nicks

Caps font 4A
?! E& points
Numerals (B)

DEUTCH
YORK
NO 58

Box 5

16-Line Saw Serif
Condensed

104

1890s?

ARSTYPO
GWXZM&

No visible marks
No nicks

NB: One of ~~five~~ ^{four} very similar fonts
without nicks
NB: Very worn

Caps font 2A?
&.

ⓑ

Box 32

16-Line sans serif
Condensed (105)

1920s?

ARSTYPO
GRAPHIAE

No visible marks
No nicks

NB: one of four very similar
founts without nicks

Caps fount SA
Numerals
& points (B)

Box 4 (large)

16-Line SansSerif

1890s?

(106)

ARSTY
PCMW

No visible marks
No nicks

Caps font 2A?
(no Q,X) !?& points
Numerals (B)

Box 5 (large)

16-Line Sans Serif (107)
1920s?

ARSTY
POGGV

DEUTCH
YORK
Nº 256

No nicks

Caps font 4A
numerals (no 1-use I?)
£ (B)

Box 6 (large)

16-Line Sans Serif. (108)

1930s?

ARSTY
POCQV

DELITKE
YORK 15
Nr 46

No nicks

Caps font 7A
Numerals
& t, points (B)

Box 1 (large)

16-Line sans (109)

1930s?

ARST
YPOG

SB&CO

no nicks

NB: There is an identical (?) font
with nicks

Caps point 4A
& !, points (B)

Box 4 (large)

16-Line Sans (110)

1920s?

ARST
YPO

SB&CO

Nicks

NB: There is an identical (?) font
without nicks

Caps font 2A
& !, ?, points (B)

Box 5 (large)

16-Line Sans

(111)

193Ds?

ARS

typo

DEUTSCHE
YORK No. 303

full font 1A/3a
(no N, Z)
& !, ?, points (B)

Case 6

16-Line Cursive Sans (112)
1960s?

ARST
YPOG

DAYBOLLING LTD
RD
480739

NB: Also a font in outline

Caps point 3 A
points

(B)

Box 5 (large)

16-Line Cursive (113)
Saw Outline

1960s?

ARST

YPOG

NB: Some sorts on 18-Line body

NB: There is also a new outline
16-Line font.

Caps font 2A
Variant E
! points

Ⓑ

DAY & COLLINS
RD
480739

Box 5

16-line sans serif
numerals

(114)

1910s?

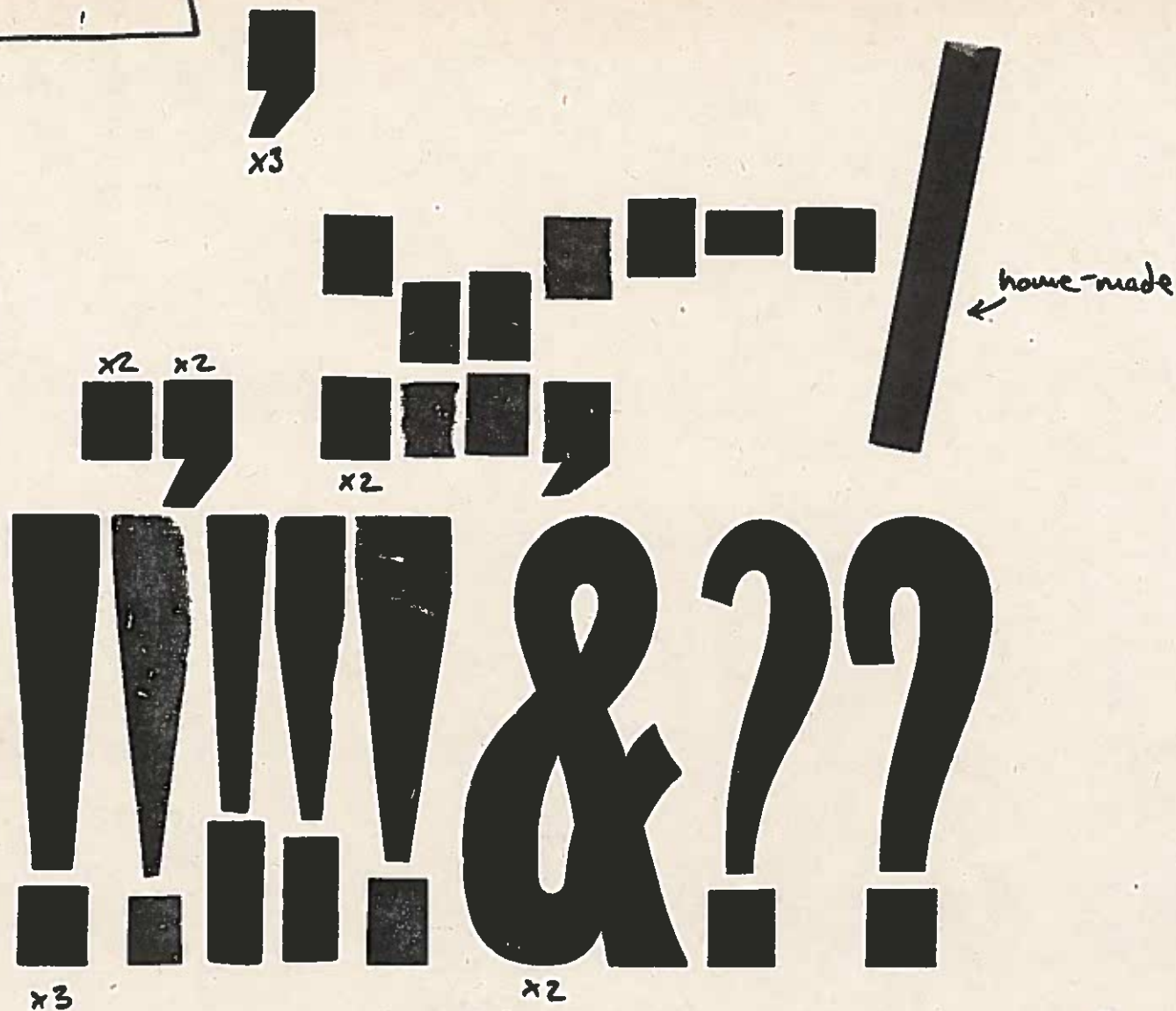
123
457

No visible marks
No wicks

Numerals incomplete (no
6/9, 0) 1(4), 2(2), 3(2), 4(2),
5(1), 7(2) (A)

Box 15

16-Line stray points (115)



No visible marks
No nicks

NB: Much of this is from the same
font, but unmatched

Prints

(B)?

Box 33

ARSTYP
OGBAFTA

18-Line slab-serif
Condensed
("French Antique")

1880s?

No marks
No nicks

Caps font 3A
! points

(B)

Box 33

ARSTYP

18-Line⁽¹⁷⁾
bracketed
slab
~~serif~~ - serif

(117)
1860s?

THIS FOUNT WAS TRANSFERRED
TO READING UNIVERSITY'S
DEPARTMENT OF TYPOGRAPHY
AND GRAPHIC COMMUNICATION
18 MARCH 2018

NB: Sign of hand-finishing

Caps font 3A
Same points
(B)/(C)?

case 7

18-Line Didone (118)
numerals

1830s?

234
567

THIS FONT WAS TRANSFERRED
TO READING UNIVERSITY'S
DEPARTMENT OF TYPOGRAPHY
AND GRAPHIC COMMUNICATION
18 MARCH 2018

No marks
No nicks

NB: Hand-finished

+ '000' linecut

+ £ ¢ ©
Numerals only (no 1)
2x2, 3x3, 3x4, 3x5,
4x6, 3x7, 3x8, 3x0

Box 7

ARSTYP
OCBAF

18-Line
Sans-Serif
Condensed

(119)

1890s?

No marks
No nicks

NB: There is another very similar
(but later) font

Caps font 4 A
(No J, K, Z)
(B)?

Box 33

18-Line Sans-serif⁽¹²⁰⁾
condensed

1920s?

ARSTY
POGBF

No marks
No nicks

NB: There is a very similar (but older)
font

Caps point 4A
(no Q)
& some points
(B)

Box 33

18-Line Sans-serif (121)

1940s?

134
567

DELITT
YORK

No nicks

Numerals (no 2)
Q ± (B)?

Box 9

20-Line Decorative^(12L)
roman 1920s?

RS A

DELITTLE
YORK

No nicks

Caps font 3A
(no C, G)! 3
& £ 6 (only) (B)

Box 32
(large)

20-Line (123)
slab-serif

1870s?

T U V
W X

No marks (no A)
No nicks

Caps font, only
T, U, U, V, V,
W, W, X, X,
Y, Z.

NB: First $\frac{2}{3}$ of font lost at an early date?

(A)

Box 10

**BRS
TYP**

20-Line⁽¹²⁴⁾
bracketed
slab-serif

1880s?

No marks
(no A)
No nicks

Capr point,
originally 3A?
(no A, K, Z)
& some points

ⓑ

Box 11

125

20-Line sans
condensed

1930s?

ARSTYP
OMNWB

No visible marks
No nicks

Caps font 3A
(no G), umerals,
some points,
&, £, ?, !

ⓑ

NB: There is another, very similar font

Box 1

AR SYP
OBQ EJ

20-Line Sans (12b)
serif
condensed

1920s?

No marks
No nicks

Caps point 2A
(no G, I, T)
points ! ? &

(B)

Box 10

THIS FOUNT WAS TRANSFERRED
TO READING UNIVERSITY'S
DEPARTMENT OF TYPOGRAPHY
AND GRAPHIC COMMUNICATION
18 MARCH 2018

ARTY
POGB

20-Line Sans (127)

1920s?

No visible marks
No nicks

Capr fount 1A
(orig. more) (no
Q, S) 4, 4, 7, 7 only
!(), (B)?

Box 7

ARSTY
POGRA

20-Line
Sans-serif

(128)

1950s?

No marks
Nicks

Caps font 3A
(no Q) !?
Points (B)

Box 32
(large)

20-Line Sans (129)

1930s?

ARST
YPOG

No visible marks
No nicks

Many of the blocks have a reddish cast-

Caps font- 3A
& !- (B)

Box 6

20-Line Sans ⁽¹³⁰⁾

1940s?

ASTY
POGQ

DELITTLE
YORK

No 41

Caps font 3A
(no R), (no D)
numerals,
points, &, !, £
?

(B)

Box 11

ARST
YPNG

20-Line
Sans
1900s?

(131)

o damaged

No visible marks
No ticks

NB: Very worn
NB: There is a very similar font (older?)

Caps font
4A
Some points

(B)

20-Line Sans

1880s?

earlier?

ARST
YPOC

Box 33

No visible marks
No nicks

Caps font 1A
(no I, Z)
points

NB: Very worn + some hand-carved sorts

ⓑ

Box 10

20-Line (33)
Sans
1940s/1950s?

ARST
YPOC

DEUTLE
YORK

No 46

Caps font
2A (once more?)
points & t?
numerals (B)

Box 4

20-Line sans (134)

1880s?

THIS FOUNT WAS TRANSFERRED
TO STEPHEN AUSTIN AND SONS
(WHENCE IT ORIGINATED)
9 FEBRUARY 2018

A B C F
H K L P

No visible marks
No nicks

NB: Very incomplete

Caps font 2A
~~A B C D E F G H I J K L~~
~~P Q R S T U V W X Y Z~~
only (NO G, I, O,
R, S, W) & . ; : (A)

Box 33

20-Line (135)
Sans

1930s?

ARST
TYO

SB&CO

Nicks

Caps font 2A
(no G, Q)
& ! - : (B)

Box 32
(large)

ARS
TYP

20-Line (136)
Sans

1940s?

No visible marks
Nicks

Caps font 3A
?! points

(B)

Box 6

20-Line bold (137)
sans

1860s?

DEEF
HPRR

No visible marks
No marks

Very imperfect. Signs of hand-finishing?

Caps font
only: D, E, F,
H, I, J, K, L, N. (line),
O, P, R, T, Y, Y
(C) (A)?

Box 11

ARST
TYP

20-Line (138)
Sans
"Cutoff"

1880s?

No visible marks
No nicks

Caps font 2A
(no D, F)
& (B)

Box 7

ARS
TYP

22-Line (139)
slab-serif

1860s?

No marks
No nicks

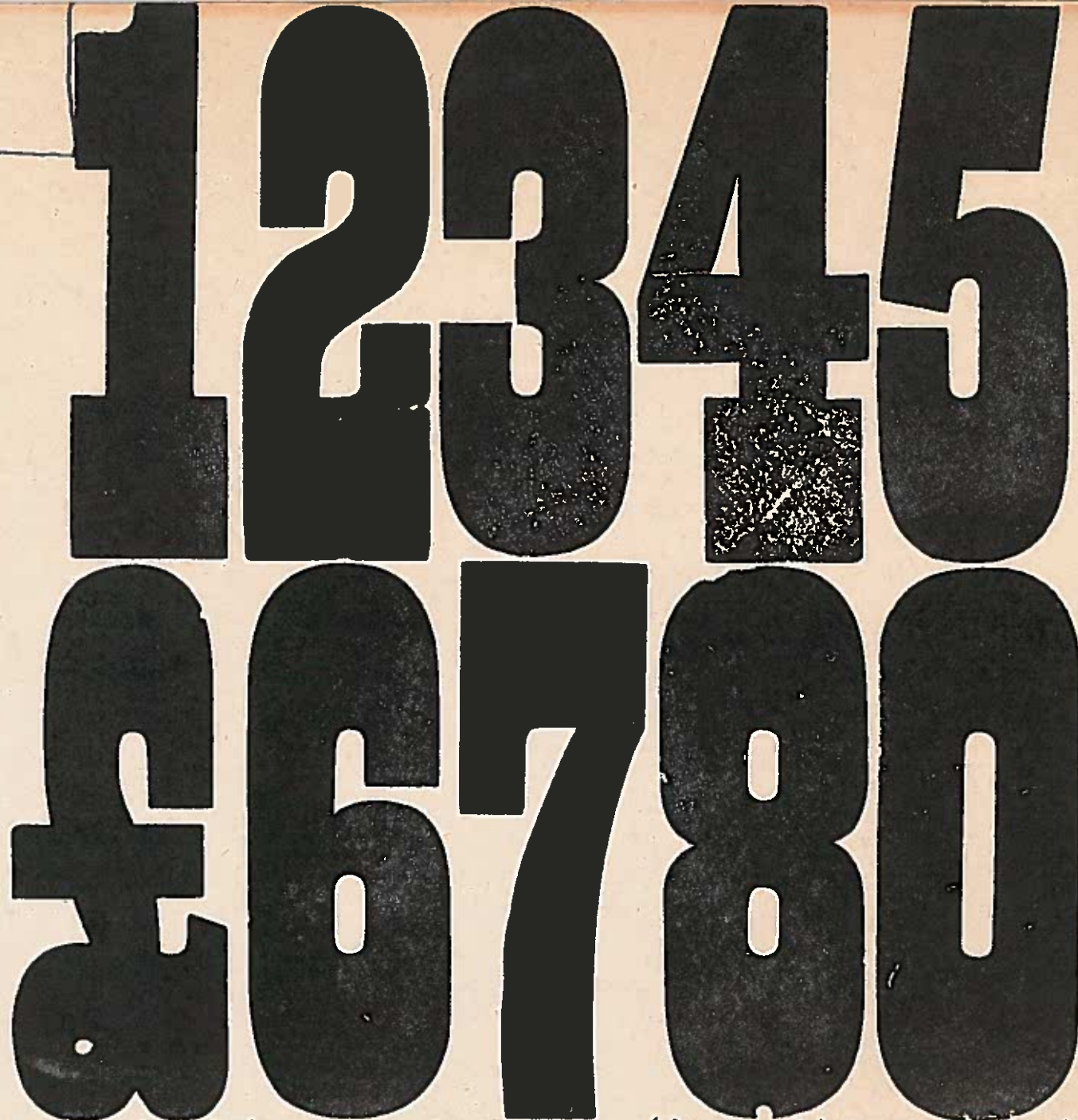
Caps font 4A?
& points
numerals

(B) (C)?

Box 10

22-Line ⁽¹⁴⁰⁾
slab-serif

1890s?



No wicks
No marks

Numerals
£ (B)

NB: Similar to another font which belongs (?) with a slab-serif cap font

Box 10

22-Line
Sans-Serif

(14)

1900s?

CLMNO
23468

No marks
No nicks

Caps font
only C, E, L,
M, N, O, 1-4, 6, 8.

NB: Very incomplete, but probably kept with another very similar font

(A)

Box 7

ARSTY
POG28

22-Line Sans ⁽¹⁴²⁾
Serif
condensed

1900s?

No marks
No nicks

NB: Another (partial) font
is very similar and was
probably kept with
this.

caps font 3A
& £ pairs
Numerals (no 3, 4)
(B)

Box 2 (large)

24-Line bracketed (143)
slab-serif

1880s?

BRIS

No visible marks (no A)
No Nicks

Caps, originally 3A? (no A,
L, X). Some points.

ⓑ/ⓒ?

Box 3 (large)

24-Line roman reversed
1960s? (144)

ARS



PATENT HARD-FACE
MACHINE-CUT

D&G

Caps, one of each
(no X)

(B)

Box 18A (large)

24-Line bracketed (145)
slab-serif numerals
(standalone?)
1950s?

124

DELITTLE
YORK

No nicks

Numerals (no 3) (B)
£

Box 2 (large)

24-Line Numerals. Bracketed (146)
slab-serif
ca. 1900?

1347

No visible marks
No nicks

Numerals (complete)
+ £ (B)

Box 18A (large)

24-Line sans (147)
condensed

1940s?

ARSTY

No visible marks
No nicks

Capr font 4A
(No G, N) points (B)

Box 31 (large)

24-Line sans (148)
numerals
(stand-alone?)

123

THIS FOUNT WAS TRANSFERRED
TO READING UNIVERSITY'S
DEPARTMENT OF TYPOGRAPHY
AND GRAPHIC COMMUNICATION
18 MARCH 2018

No nicks

Full fount of numerals
£ (B)

Box 20 (large)

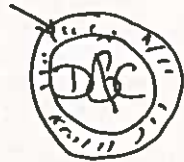
24-Line cursive sans
1960s? (149)

ARS

PATENT MACHINE-CUT
HARD-FACE

RAY & COLLINS
RD
7480739

all sorts



A only

No nicks

NB: Some sorts on 28-Line body
NB: Also have a shadow version
of this font

Caps, 3A
(Variant E)
points

(B)

Box 15 (large)

24-Line cursive saw
(~~shadow~~)
outline

150

1960s?

ARS

WY & COLLINS
R²
48073950

all sorts



Amby

PATENT HARD-FACE
MACHINE-CUT

No nicks

NB: Some sorts on 28-Line body
NB: Also have a font without
shadow

Caps, 3A
(variant E)
points (B)

Box 32

26-Line modified (ISI)
Sans serif

Ca. 1890?

ARST

No visible marks
No nicks

Caps font 2A (no N)
Numerals
& £? some points (B)

Box 3 (large)

28-Line bracketed (152)
slab-serif

1880s?

ARS

No visible marks
No nicks

some double-sided/
hand-carved

Caps found 3A (no Q,
V, Y) + 3 metal Ns (B)?
comma

Box 29

30-Line Roman (153)
ca. 1920s?

AG

no visible marks

Some blocks very abn, some pristine,
a few home-made

caps font: A D E G H K K M M N N
O P Q R S T U U V W X Y Y Z & only
(= home-made?) (B)

Box 13
(large)

30-line slab serif (154)

ABOR

no visible marks
no nicks

Caps font 2A (B)
No z
1 full point + 1 broken A

Box 12

30-Line slab-
serif (155)

ca. 1900?

BN2

no visible marks

Caps font (originally 4A?) wants:

A, D, H, ~~W~~, Z

numerals: wants 5

(B)

Box 14 (large)

• 30-Line Sans Serif (156)
ca. 1930s?

ARS

SB
& Co
LTD

no nick

NB: Another very similar font is slightly
taller, slightly older, and more
complete.

Caps font 1A? (Wants B, C,
G, H, J, K, M, N, O, P, Q) & points
(2x V, W, L, S) (A)

Box 16 (large)

30-Line sans
ca. 1900?

(157)

AQR

No visible marks
no nicks

N:B: Another very similar
font is slightly later, slightly
shorter, with marks of S.B. & Co.
NB: Some blocks bear printed slips identifying the letter

Caps font 3A, Q, ;, .

(B)

Box 17

3D-LINE
Sans (158)
Clean (some
unused) 1960s?

RA

"SB & Co" on A

Full upper case (no S)
Punctuation (B)

Box 13

30-Line Sans Bold (159)
"Grecian"? (cut-off)

ca. 1920s



Not visible marks
No nicks

Caps font (originally 3A?)
Wants: G U Z
&

(B)

Box 34

34-Line Sans (160)
Condensed

ARSTY

1880s?
earlier?

No marks
No nicks

NB: Signs of hand-finishing

Caps count 3A
& points (B)

Box 26 (small)

36-Line Roman (161)
ca. 1890?

THIS FOUNT WAS TRANSFERRED
TO STEPHEN AUSTIN AND SONS
(WHENCE IT ORIGINATED)
9 FEBRUARY 2018

no visible marks

S

S only

Belongs with 162?

(A)

Box 20

36-Line bracketed (162)
Slab serif
1880s?

THIS POINT WAS TRANSFERRED
TO STEPHEN AUSTIN AND SONS
(WHENCE IT ORIGINATED)
9 FEBRUARY 2018

No visible marks
No wicks

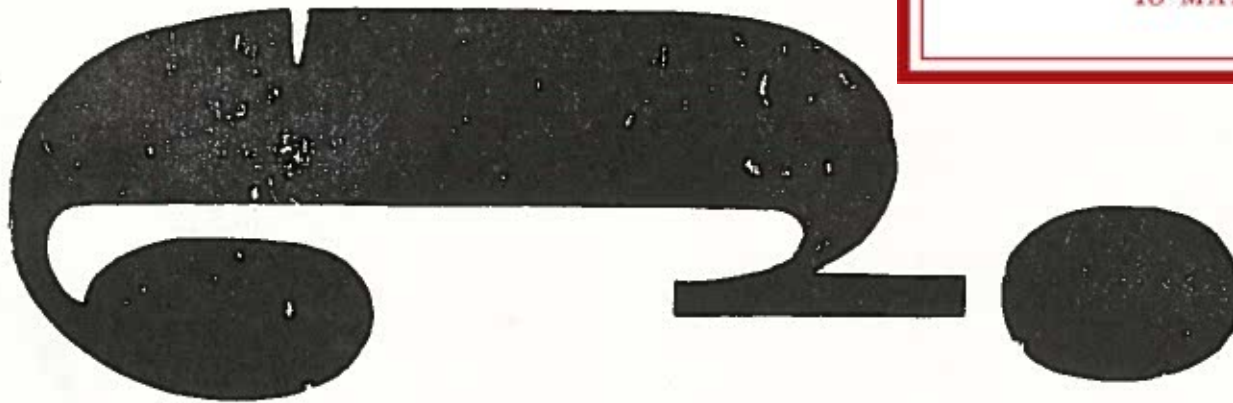
Belongs with 161?

DHHO only (A)

Case 5

38-Line Question-mark
1830s ? (163)

THIS FOUNT WAS TRANSFERRED
TO READING UNIVERSITY'S
DEPARTMENT OF TYPOGRAPHY
AND GRAPHIC COMMUNICATION
18 MARCH 2018



No visible marks

Hand-carved

This only

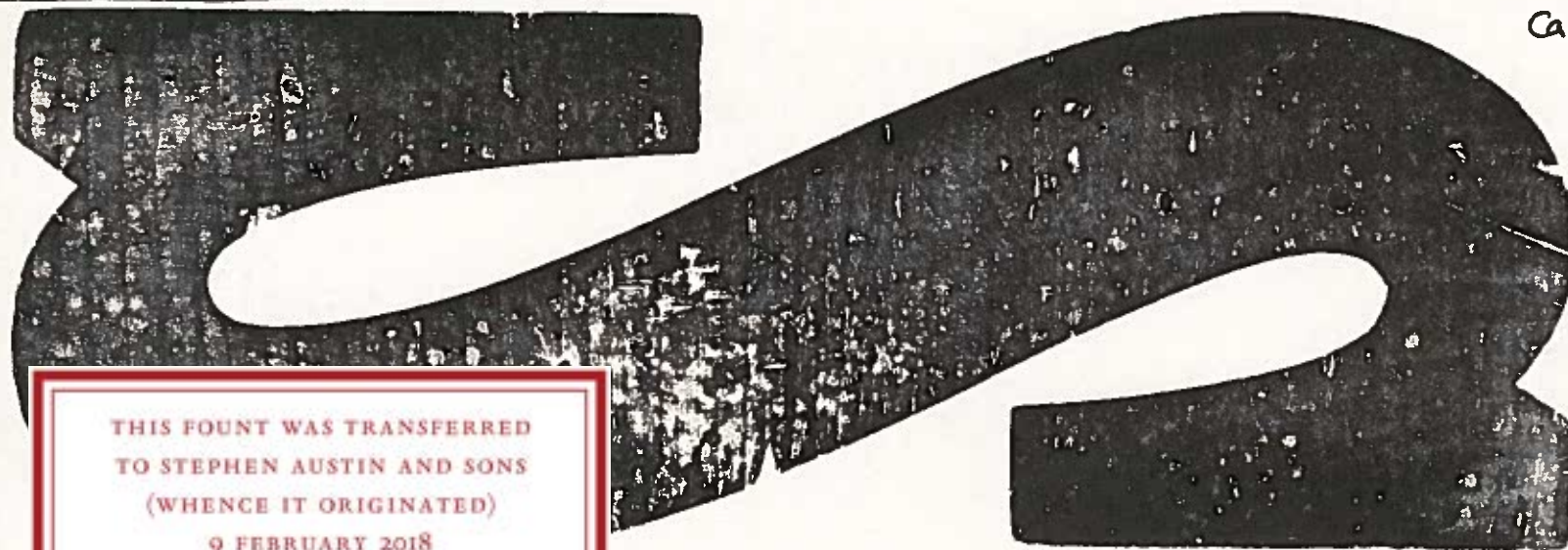
©?

Box 29 (large)

50/51-LINE
SLAB-SERIF

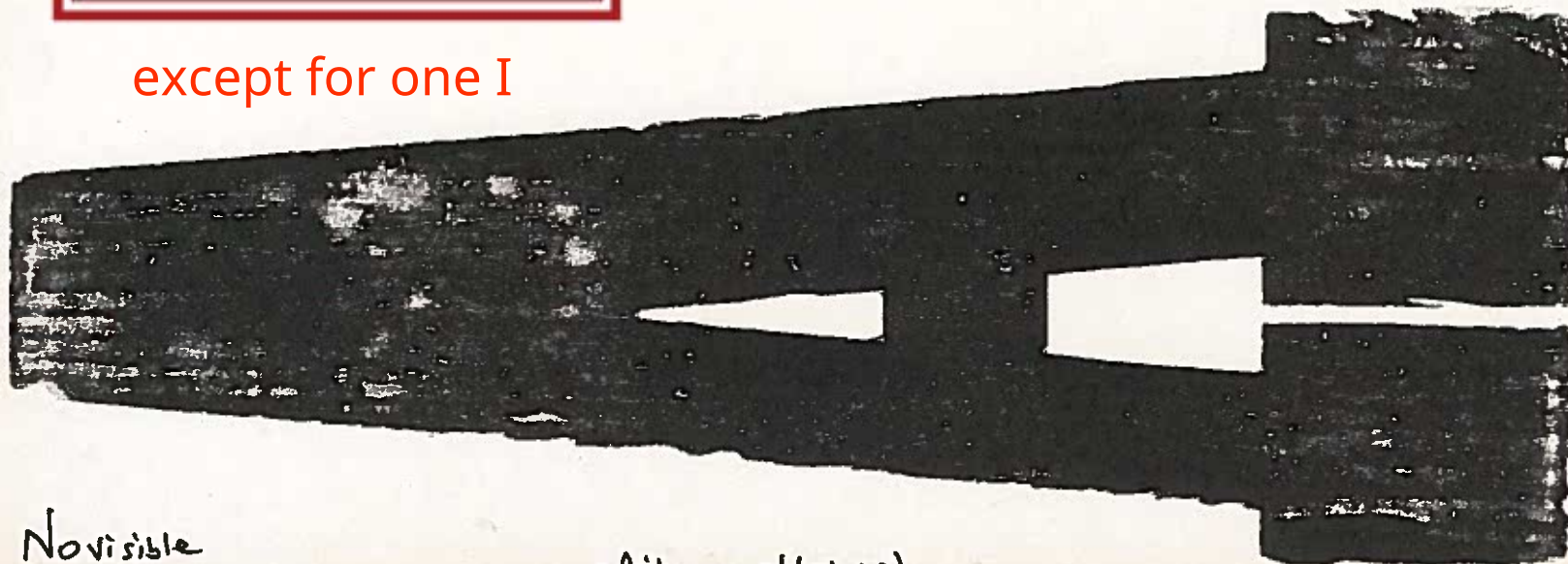
(164)

Ca. 1890?



THIS FOUNT WAS TRANSFERRED
TO STEPHEN AUSTIN AND SONS
(WHENCE IT ORIGINATED)
9 FEBRUARY 2018

except for one I



Not visible
marks

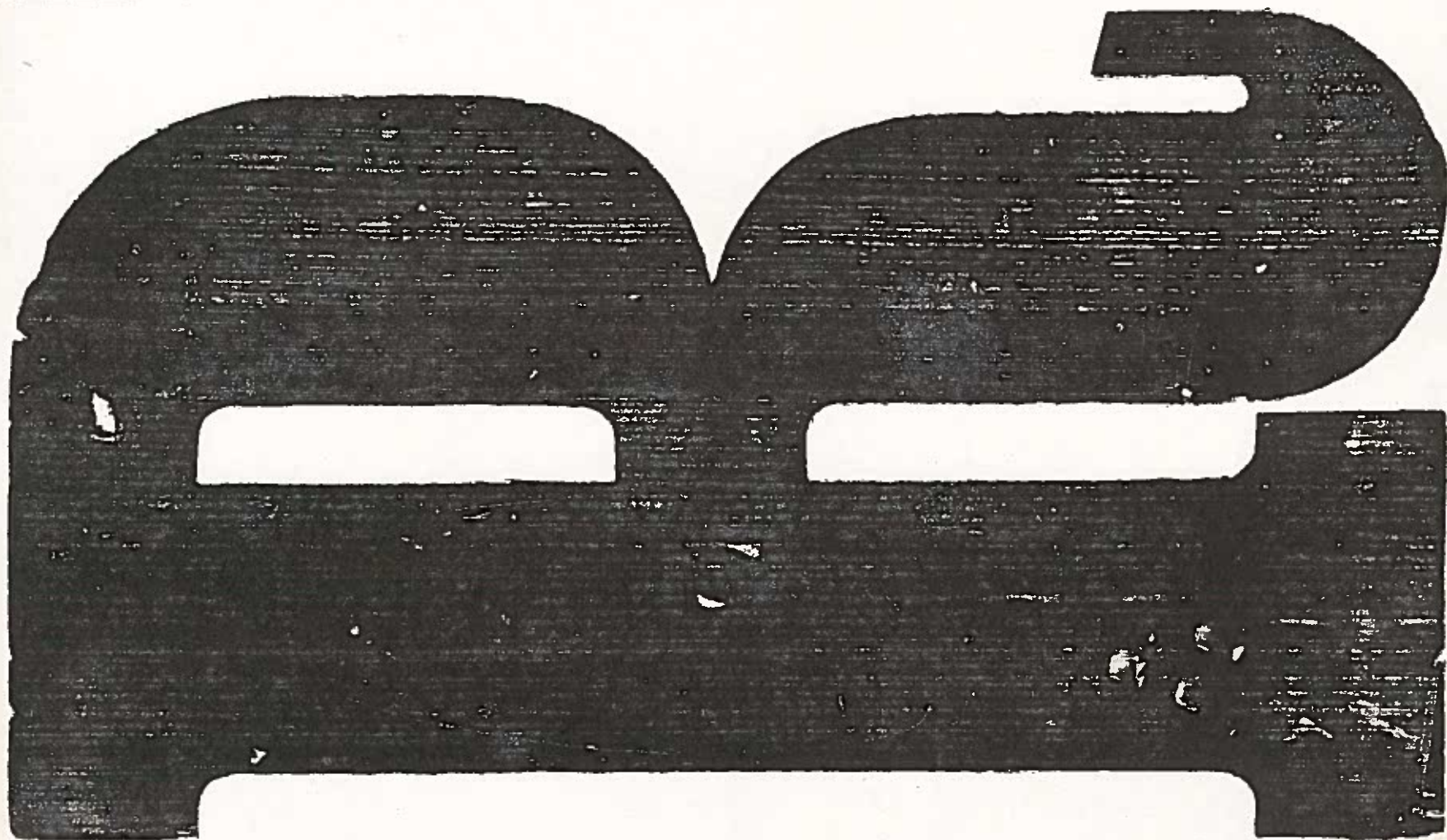
White mould (paint?)
(superficial)

(A, A, B, G, I, I, J, L, O, P, S, Z) + R, T

14
1/2 pieces
only
(B)

Box 31 (large)

55-Line bracketed slab-sent
~~12 lines sent~~ (165)
~~1440s?~~ | 1890s?

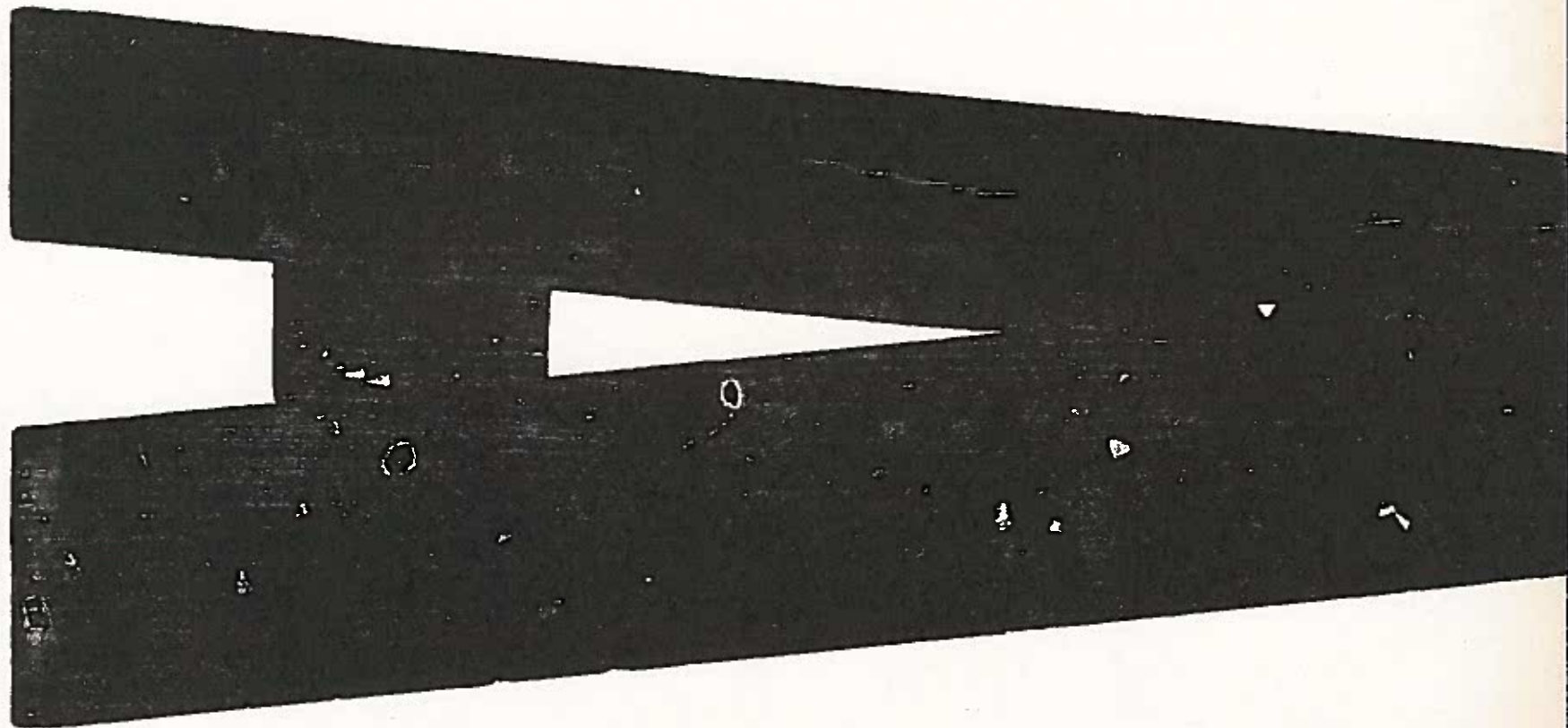


No marks (no A)
No nicks

9 pieces
Caps (only B, B,
E, G, I, L, R, S, Z) (B)

Box 8 (large)

SS-Line Sams (166)
1920s?



No marks
No nicks

Some battle-sided
(supplying F, U, V, X)

Caps found, one of each
(two A, E, M, O),
(no B, Q, R, T, U, W, X)

(B)

Box 29 (large)

65-LINE ROMAN
ca. 1890? (167)

THIS FOUNT WAS TRANSFERRED
TO STEPHEN AUSTIN AND SONS
(WHENCE IT ORIGINATED)
9 FEBRUARY 2018

No visible marks

white mould (paint?)
(superficial)

(C, I, J, K, L, Q, S, T, &) (B)

9 Pieces only